



Experimentation on federated testbeds in Fed4FIRE

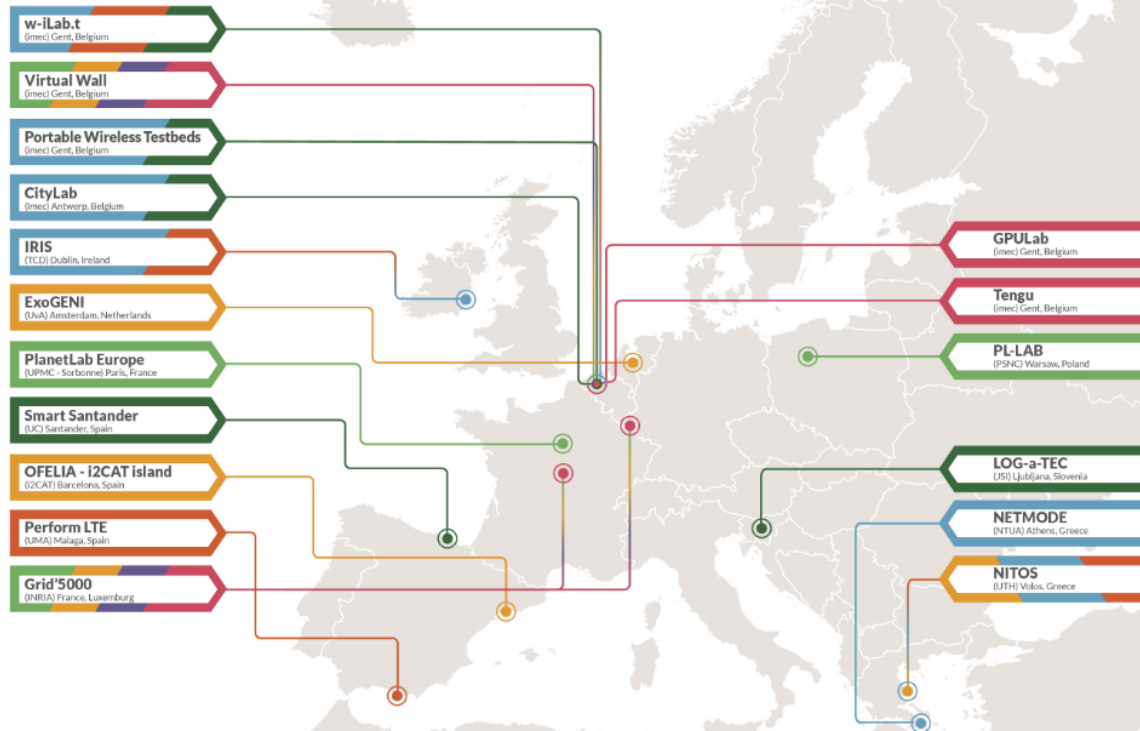
Brecht Vermeulen

imec

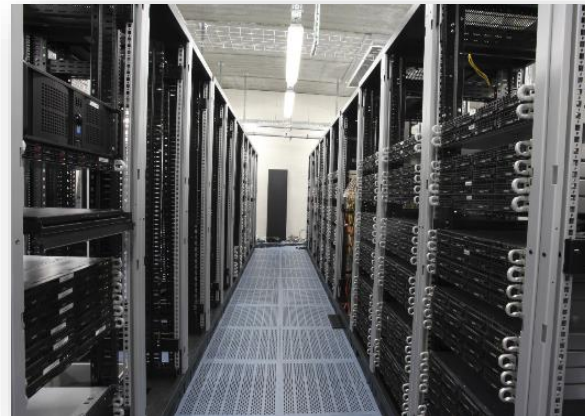
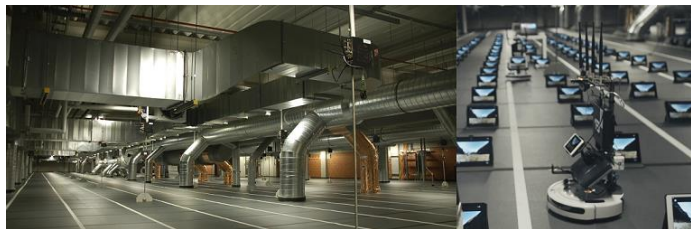
NGI Atlantic webinar

Sept 9, 2020

Fed4FIRE assets – facilities (doc.fed4fire.eu)



Multiple technologies



Goals of federation



Make it easy for experimenters to use multiple testbeds

- Single account
- Single (or small number) of tools, choice of tools

Multiple testbeds

- To scale up
- To use/combine special resources (e.g. wireless robots)
- Redundancy (e.g. testbed in maintenance)
- To re-use experiments (class exercises, scientifically, ...)
- To compare environments (e.g. wireless, openflow hardware, ...)

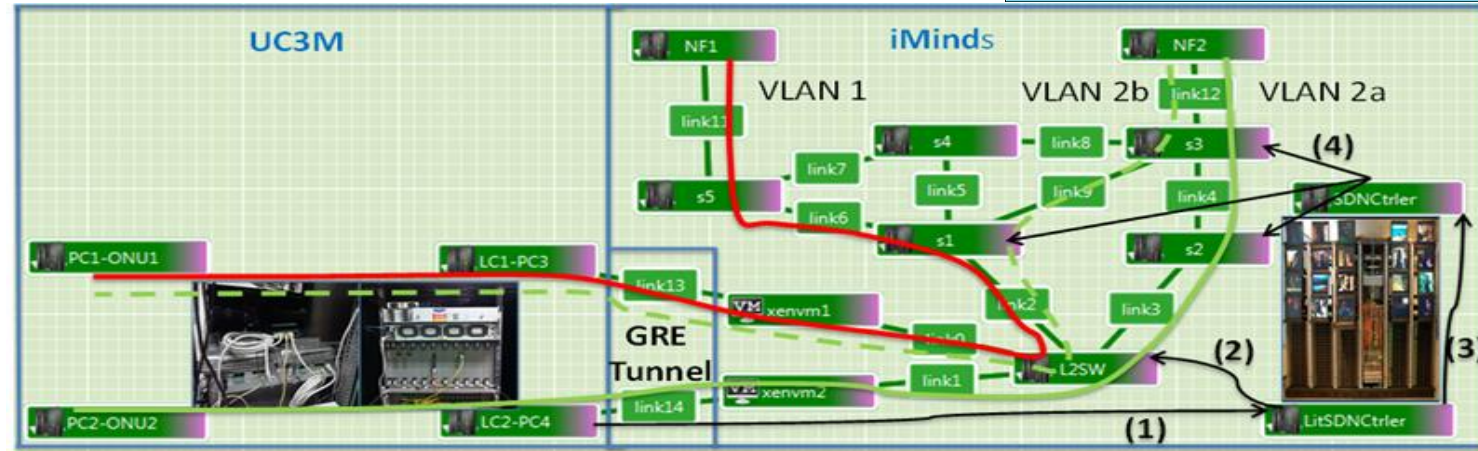
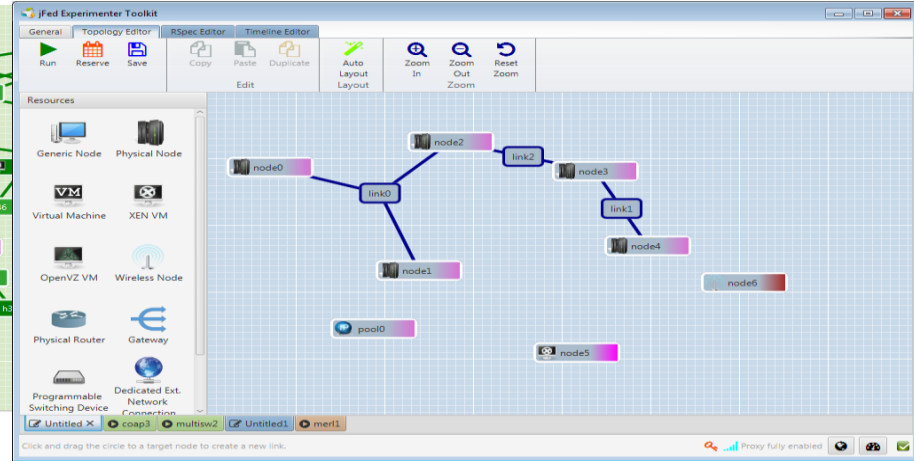
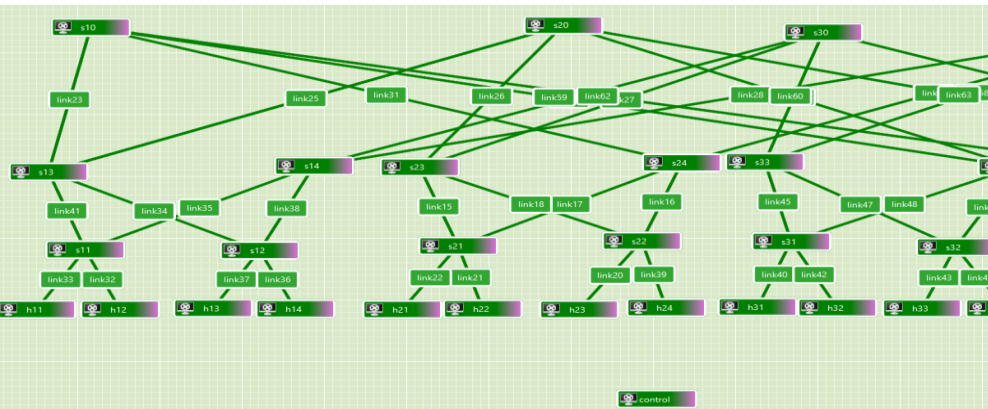


Remotely Experiment with
new technologies

#Testbeds usable with Fed4FIRE account: +65



jFed tool: easy access for testbeds (jfed.ilabt.imec.be)





Open access

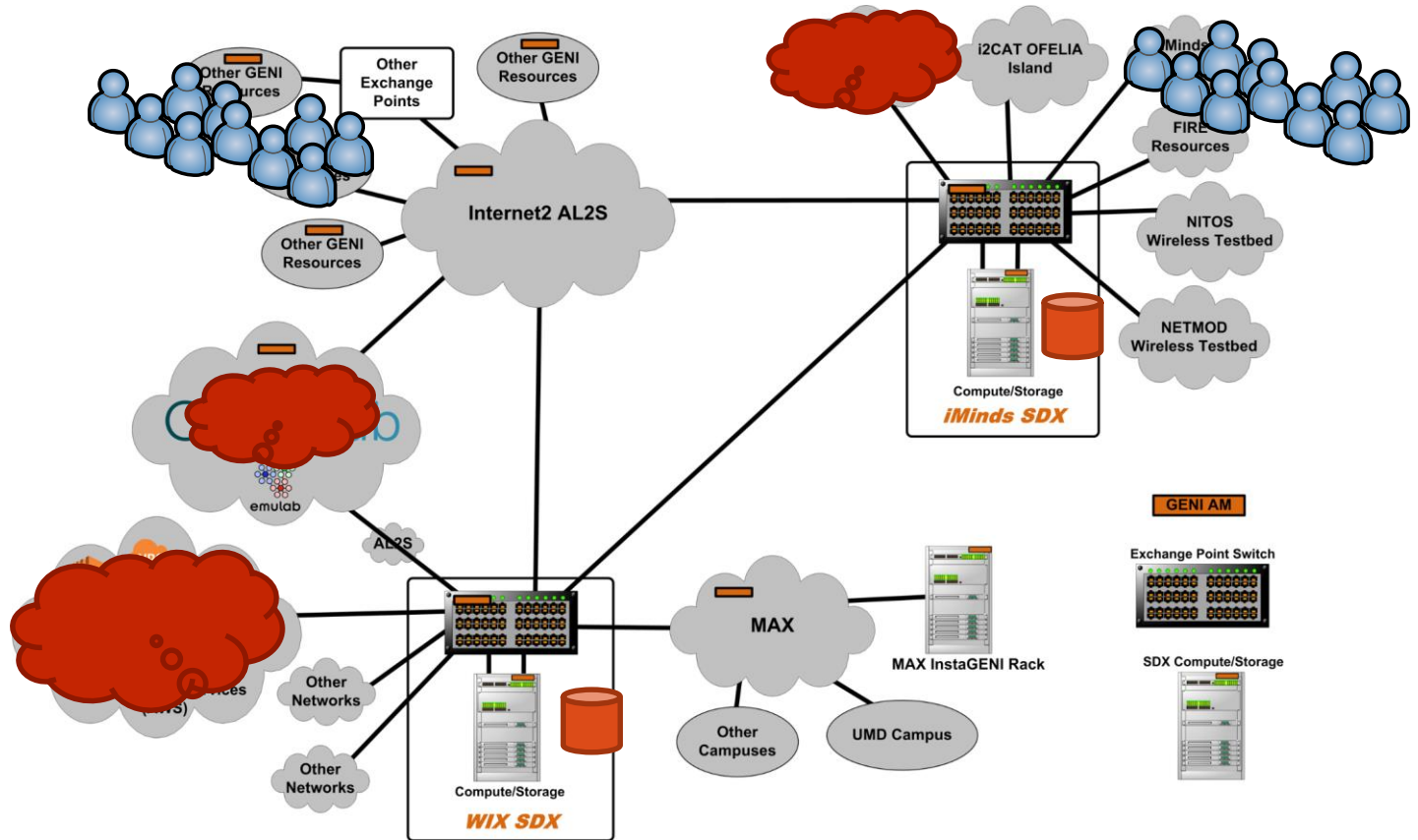
Fed4FIRE testbed access is free for research

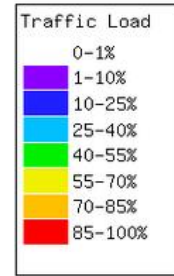
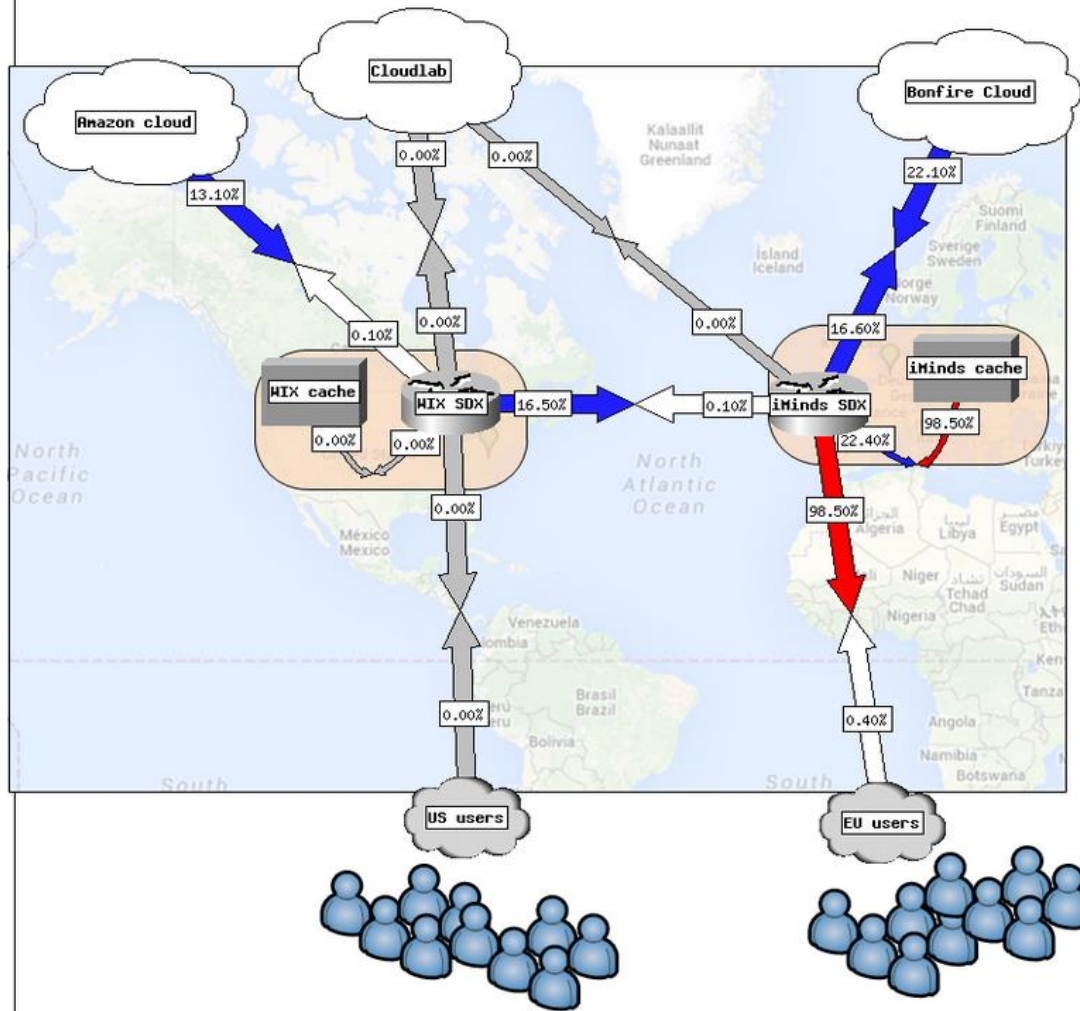
With limited use of resources

With limited best-effort support

There is a learning curve, certainly for more complex experiments
(or for interconnecting testbeds)

Very complex experiment (Geni Engineering Conference 25)







Co-funded by the
European Union



Co-funded by the
Swiss Confederation

This project has received funding from the European Union's Horizon 2020 research and innovation programme, which is co-funded by the European Commission and the Swiss State Secretariat for Education, Research and Innovation, under grant agreement No 732638.

BRECHT.VERMEULEN@IMEC.BE

CONTACT@FED4FIRE.EU

[HTTPS://DOC.FED4FIRE.EU](https://doc.fed4fire.eu)

WWW.FED4FIRE.EU